

Rueil Malmaison, 6 April 2016

VINCI Construction to build the future CNIT - La Défense station and the adjacent tunnels

- **A new station at La Défense as part of the extension of the RER E towards the west of Paris (Eole)**
- **A highly technical underground worksite**
- **A contract worth 496 million euros**

SNCF Réseau has awarded VINCI Construction – through its subsidiaries VINCI Construction France (lead company), VINCI Construction Grands Projets, Dodin Campenon Bernard, Soletanche Bachy France and Botte Fondations, in a joint venture with Spie Batignolles TPCI and Spie Fondations – the contract to build the new La Défense station and the adjacent tunnels.

The works, entrusted to the joint venture and amounting to €496m, are part of the extension of RER line E towards the west of Paris (Eole). The works will start in the summer of 2016 and will continue for 61 months. The operation will mobilise 700 construction workers at the peak of activity. It requires four million hours of labour with more than 300,000 hours that will be carried out under work-integration programmes.

With this worksite, VINCI Construction confirms its expertise in management of major projects and its know-how in underground works and foundations.

A complex structure under an emblematic site: the CNIT

The operation covers building the new La Défense station under the CNIT dome, a highly technical project that entails building an underground cathedral while supporting the existing structures and ensuring operational continuity of the site. All the CNIT offices, shops and hotel must continue to function normally throughout the duration of the works.

Apart from the underground structural work beneath the CNIT itself, the company will also be building one kilometre of tunnels, a 40m-deep and 15m-diameter shaft and a large number of underground pedestrian corridors enabling connections between the RER E and A lines, the L and U lines of the Transilien and the T2 Tramway.

A huge technical feat in the heart of the La Défense business district

The major challenge of the worksite is that it has to be executed in the dense and complex urban environment of La Défense, the works requiring the excavation of 350,000 cu. m. of rubble.

PRESS CONTACT
VINCI Press Department
Tel.: +33 1 47 16 31 82
media.relations@vinci.com

An ambitious project that opens the way to the Grand Paris Express network

Extension of the RER E line will significantly reduce travel time for thousands of Paris region residents and thereby improve their everyday lives. Extending the E line and building the new CNIT-La Défense station will provide commuters with better quality of service and connections with other RER lines and the future Grand Paris Express network.

This new construction project comes in the wake of other operations already conducted by VINCI in Europe's largest business district. In December last year, the Group announced construction of Trinity, an innovative new skyscraper on which works will be completed in the second half of 2018.

For more information about Eole : www.rer-eole.fr

About VINCI Construction

VINCI Construction, a global player and European leader, is active on five continents, with more than 68,000 employees and almost 800 companies generating 2015 revenue of €14.5 billion. Structured according to an integrated model, the company has the capacity to intervene over the entire life cycle of a structure (finance, design, construction, maintenance) in eight sectors: buildings, functional structures, transport infrastructure, hydraulic infrastructure, energy, the environment, oil & gas, and mines.

www.vinci-construction.com

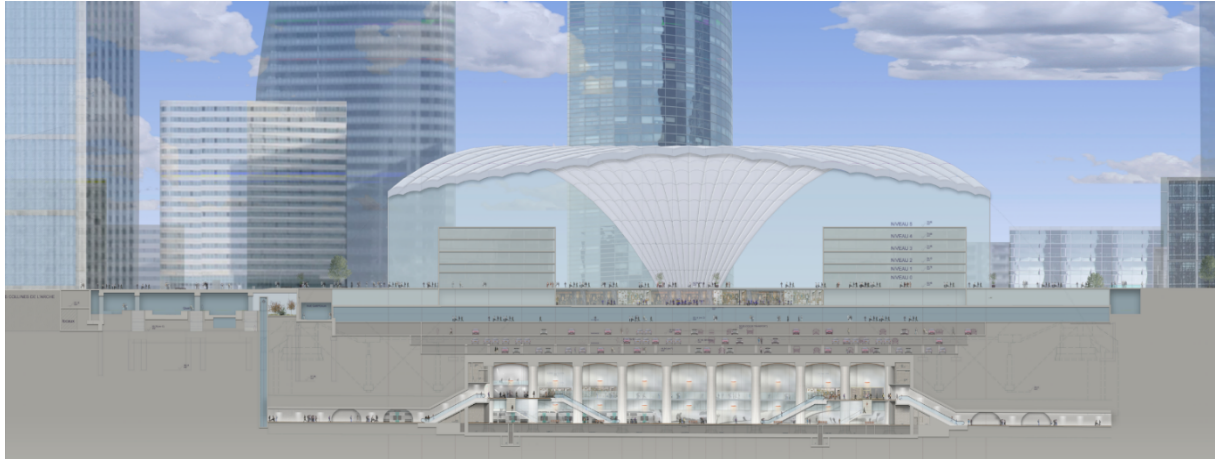
About VINCI

VINCI is a global player in concessions and construction, employing more than 185,000 people in some 100 countries. We design, finance, build and operate infrastructure and facilities that help improve daily life and mobility for all. Because we believe in all-round performance, above and beyond economic and financial results, we are committed to operating in an environmentally and socially responsible manner. And because our projects are in the public interest, we consider that reaching out to all our stakeholders and engaging in dialogue with them is essential in the conduct of our business activities.

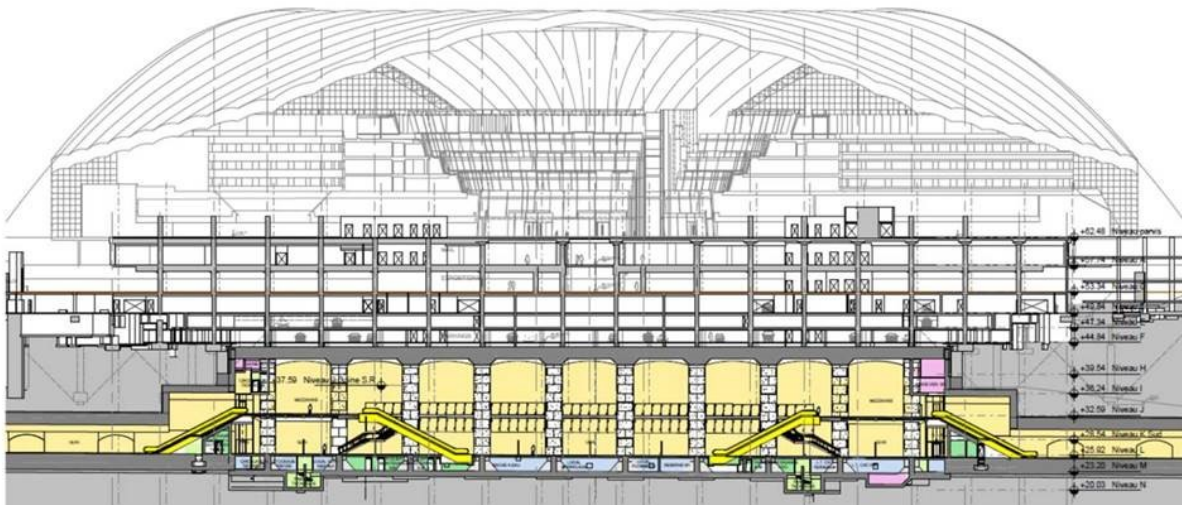
www.vinci.com

PRESS CONTACT
VINCI Press Department
Tel.: +33 1 47 16 31 82
media.relations@vinci.com

PRESS RELEASE



Setec-Egis-Duthilleul-Arep



Setec-Egis-Duthilleul-Arep

PRESS CONTACT
VINCI Press Department
Tel.: +33 1 47 16 31 82
media.relations@vinci.com