

# 2020 ESSENTIALS

MAJOR PROJECTS  
DIVISION



Message from the Chairman — p.3

## OUR DNA

About us — p.4

Our projects in France and abroad — p.6

Organisation of the Group — p.8

Our identity — p.10

## OUR VALUES

Safety, Ethics and human rights — p.20

Technical excellence, innovation and research & development — p.22

Environment — p.24

## OUR PROJECTS

Our emblematic, synergy-based projects — p.26



### Photographic credits

Yves Chanoit, A. Destienne/Capa Pictures, Augusto Da Silva, Marc Dossmann, Droneway, E.J.F. Riche - ITER Organization, Femern A/S, Jean-Yves Govin Sorel, Philippe Guignard, Image IN, Didier Raynaud, Patricia Raynier, Michel Richard, SGP Delaporte, Alexandra Soria, Alexis Toureau, VINCI and subsidiaries photo libraries.

### On the front cover

Teams from the Major Projects Division take part in the breakthrough of the Allison tunnel boring machine in Maison Blanche station, on line 14 South of the Grand Paris Express.



# Patrick KADRI

**managing director  
of the VINCI Construction Major  
Projects Division and Chairman  
of VINCI Construction  
Grands Projets**

**T**he Major Projects Division has demonstrated its resilience by confronting the challenges raised by the health crisis, managing their impact and ensuring the health and safety of its employees. Despite the unusual circumstances, it has been able to rely on the commitment, solidarity and sense of responsibility of complementary teams and the diversity of its business lines to maintain its momentum, with the continuation or resumption of its projects and historic orders.

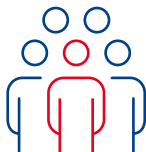
While 2020 highlighted the solidity of the Major Projects Division's fundamentals, it was also the year in which the Division benefited from the integration of Spiecapag, VINCI Environnement, Entrepose Contracting, Geostock and Geoclean, whose know-how now complements that of VINCI Construction Grands Projets, VINCI Construction Terrassement and Dodin Campeon Bernard. The 10,000 employees - men and women from all backgrounds - who make up this new unit share a common ambition: excellence for overall performance, on behalf of clients and communities.

# About US

**Following in the footsteps of century-old companies, the Major Projects Division is active on five continents.**

Aware of their impact on the regions in which they operate, the Division's men and women design and construct buildings and large infrastructure that respond to the challenges that we will face in the future: mobility, lifestyle improvements, environmental conservation and the efficient production of sustainable energy sources.

# OUR PERFORMANCE IN FIGURES\*



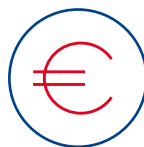
**7,740**

employees



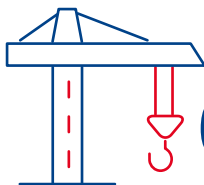
**€6.9Bn**

order book



**€1.9Bn**

turnover



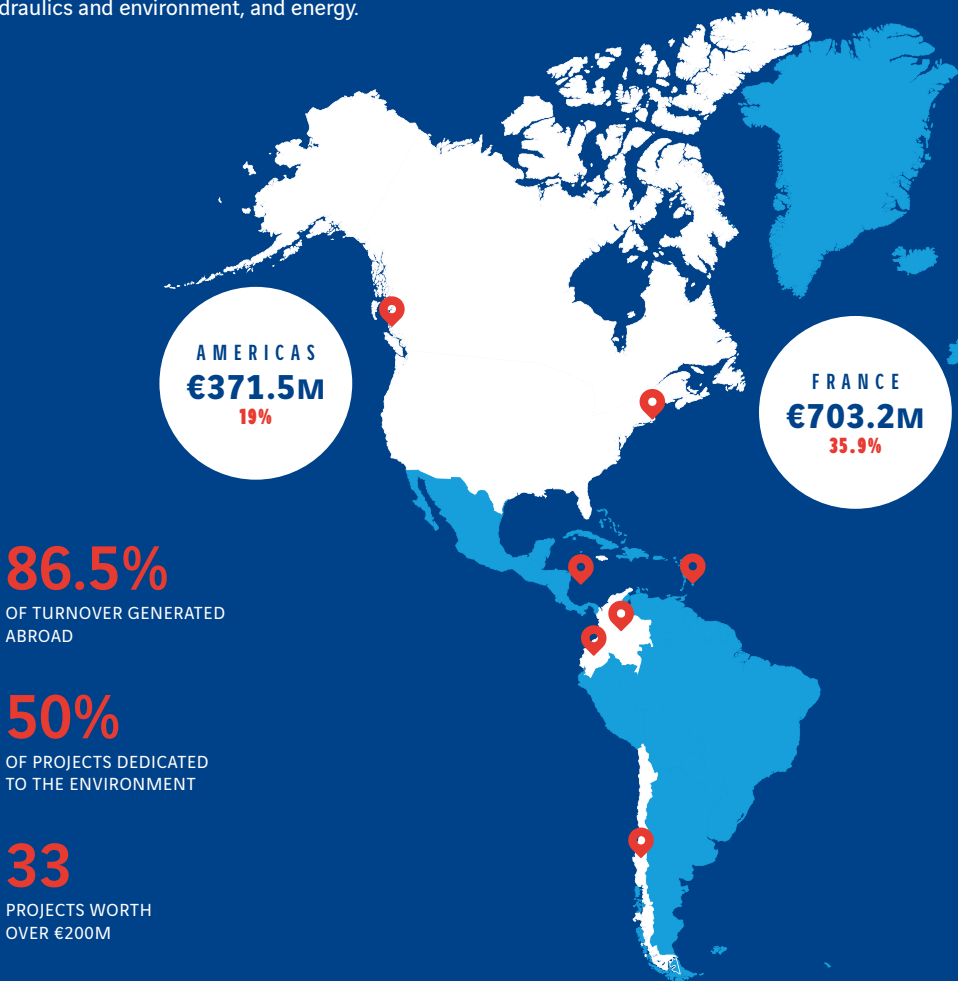
**600**

current projects

\* excluding Entrepouse

# OUR PROJECTS IN FRANCE AND ABROAD

We make use of our expertise, mastery and boldness to carry out highly technical projects around the world, in four main areas: transport infrastructure, buildings and functional structures, hydraulics and environment, and energy.

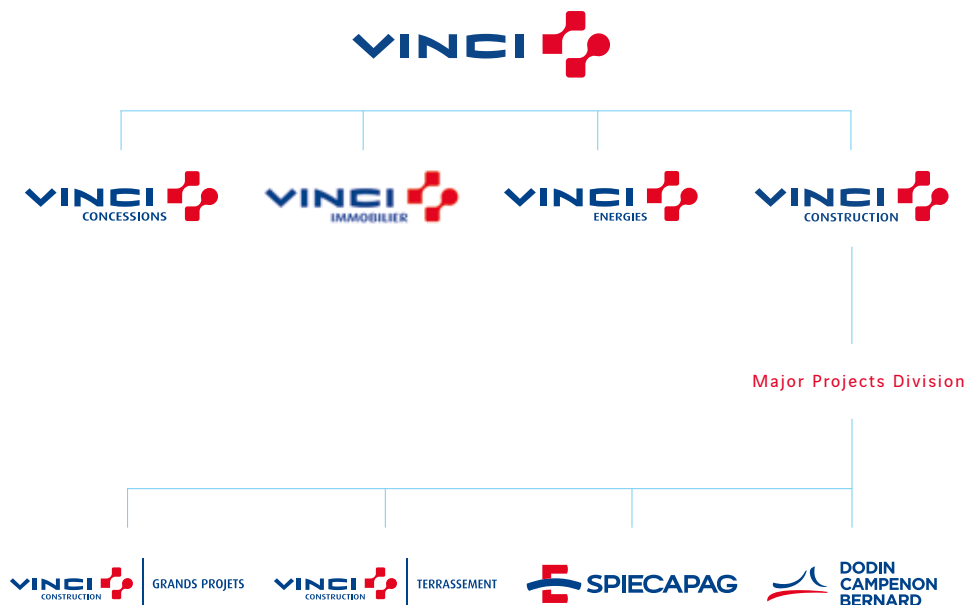






# ORGANISATION OF THE GROUP

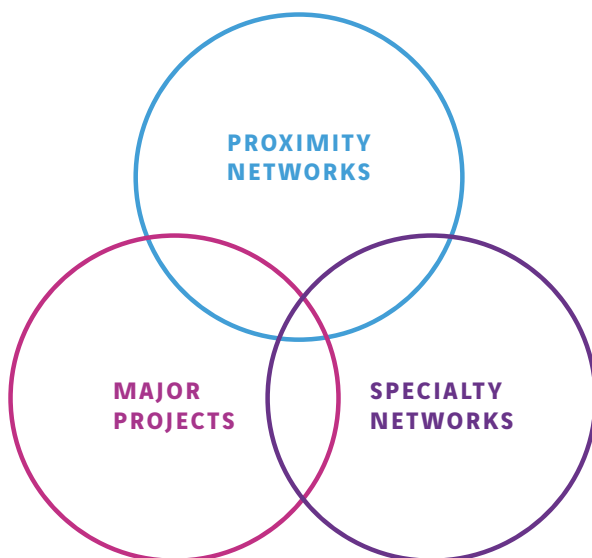
Around the world, the Major Projects Division brings together expertise and activities dedicated to the biggest and most complex worksites.





# POSITION WITHIN THE CONSTRUCTION BUSINESS LINE

VINCI Construction, the global leader in its business lines, constructs buildings, structures and infrastructure that improve the living environment, mobility and economic competitiveness of the regions. Comprising three complementary components, VINCI Construction provides an unparalleled range of areas of expertise and has offices in over 100 countries.



# MAJOR PROJECTS DIVISION\*



**PATRICK KADRI,**  
managing director  
of the VINCI Construction  
Major Projects Division



GRANDS PROJETS



**PATRICK KADRI,**  
chairman

Operational division  
France, Europe  
and Russia

**DFER**



**LIONEL RAVIX,**  
operational director

Operational division  
Asia, buildings  
and water works

**DABH**



**YANICK GARILLON,**  
operational director



Operational division  
America  
and LNG tanks

**DALNG**



**FADI SELWAN,**  
operational director



Operational division  
Qatar, Middle East  
and Africa

**DQMA**



**PHILIPPE TAVERNIER,**  
operational director



**JEAN-PIERRE BIZOLLON,**  
chairman



**BENOIT DENIZOT,**  
chairman



**BRUNO GUY DE CHAMISSO,**  
managing director

# VINCI CONSTRUCTION GRANDS PROJETS

Driven by its ambition to design major infrastructure of the future, VINCI Construction Grands Projets capitalises on its expertise and performance culture to design and build highly complex civil engineering structures, particularly in the energy, hydraulics and environment, building and transport sectors around the world.



## The year at a glance

In addition to finalising certain emblematic infrastructure projects, such as ITER or the New coastal road viaduct, the signing of key contracts (High Speed 2 rail line in the UK, Sambagalou dam in Senegal, City Rail Link in New Zealand) and the continuation and launch of large-scale worksites (Grand Paris Express, Abdelmoumen pumped storage power plant in Morocco, Bakheng drinking water treatment plant in Cambodia, Ottawa's Confederation Line in Canada) have underpinned the company's dynamic performance and given rise to a new cycle of major projects.



**4,785**  
employees



**€1.1Bn**  
turnover



**65**  
current projects



**€4.5Bn**  
order book



UNITED KINGDOM

**The purpose  
of the Thames  
Tideway project  
in London,**

is to significantly increase wastewater treatment capacity through the use of storage tunnels that shall reduce by over 80% wastewater discharges into the Thames during thunderstorms.

# VINCI CONSTRUCTION TERRASSEMENT

Designer-builder of large linear infrastructure, VINCI Construction Terrassement is also a major operator in the area of coast and waterway developments, environmental projects, sites and platforms in France.

Thanks to its unique know-how, combined with the capacity to operate on its own around the world, the company has an overall vision of the projects and is recognised for its ability to incorporate environmental, social and societal factors.



## The year at a glance

Beyond the company's large number of regional worksites in France, its dynamism is apparent in its international achievements, both with its partners in the Major Projects Division (High Speed 2 rail line in the UK, line 18 of the Grand Paris Express) as well as VINCI Construction, thanks in particular to the key project, West Calgary Ring Road, in Canada, and the strengthening of its network with the integration of Climent TP.



**1,923**  
employees



**€480m**  
turnover



**475**  
current projects



**€1.5Bn**  
order book





FRANCE

**The modernisation and extension of the port of La Cotinière,**

under a public-private partnership, reaffirmed its role as a leading fishing port in Nouvelle-Aquitaine. The work, located close to a fragile coastal conservation area, was carried out in compliance with high environmental standards.



# SPIECAPAG

With more than 60,000km of pipeline laid around the world, Spiecapag offers an innovative range of services for the construction of onshore pipelines and associated infrastructure, as well as water-supply or ore-transport networks, and boasts an unparalleled reputation for working in the most challenging environments.



## The year at a glance

The completion (Trans-Adriatic Pipeline) and continuation (Coastal Gas Link) of large-scale projects maintained its business activities, supported by those of its specialist subsidiary, HDI (horizontal directional drilling) and geographic subsidiaries in France (Spiecapag Régions France), Australia (Spiecapag Australia, HDI Lucas) and Brazil (Intech).



**502**

employees



**€218M**

turnover



**40**

current projects



**€305M**

order book



## ALBANIA

### **The Trans-Adriatic Pipeline**

since the end of 2020 has transported gas from Azerbaijan to Europe, thereby contributing to the diversification of the continent's natural gas supplies and to the continuation of its energy transition policy.



# DODIN CAMPENON BERNARD

As a major long-standing public-works player in France, Dodin Campenon Bernard capitalises on its extensive technical and operational expertise to put forward to clients a complete offer in the areas of major underground works and civil engineering, while integrating all of the management stages of such projects, from design to execution.



## The year at a glance

Alongside the completion of exceptional projects, such as the New coastal road viaduct and the Strasbourg western bypass, recent achievements abroad, such as the signing of the Renouveau La Fontaine tunnel project in Montreal, and in France, such as the Avrieux shafts for the TELT project and new lots for Grand Paris Express, have resulted in an exceptional order book.



**530**  
employees



**€217M**  
turnover



**18**  
current projects



**€650M**  
order book





FRANCE

**The e-déf project  
Eole-La-Défense,**

under CNIT in operation, forms part of the extension of the RER E line towards the west of Paris (Eole), which aims to significantly reduce the travel time of hundreds of thousands of people living in the Greater Paris region and improve their day-to-day lives.

# SAFETY, ETHICS AND HUMAN RIGHTS

## Safety

Our men and women are our primary asset. Our first obligation is to protect their physical integrity, as well as that of all those who work on our sites. Their health and safety constitute one of the most important pillars of our operational performance. Safety, an absolute priority, is present throughout every phase of our projects: our Safety in Design initiative, common to all VINCI Construction entities, embodies this ambition and aims to ensure optimal safety during the construction, operation and maintenance of our structures.

Our zero-accident culture is built on the search for excellence and continuous training, team spirit, individual and collective responsibility, transparency and the implementation of an organisational structure, processes and safeguards of the highest standards.



## SKILL DEVELOPMENT

**International Safety Week plays a vital role in increasing skills and preventing risks.**

Through conferences, workshops and quizzes, our employees embody this shared responsibility and testify to the importance given to safety which they bring to life every day.





#### A REGIONAL COMMITMENT

**In addition to the "Chantiers & Territoires Solidaires" endowment fund,** which supports association-based projects in the close vicinity of the Grand Paris Express projects in which the Group and the Major Projects Division are involved, VINCI Construction Terrassement launched SolidariTerr' in 2016, an innovative solidarity-based scheme that aims to support on a human as well as a financial level projects conducted in partnership with local associations.

## Ethics and human rights

Leading by example is central to our activities. Our commitment to perfect transparency and faultless conduct helps forge a bond of trust with our clients and stakeholders. The Major Projects Division endeavours to scrupulously apply its fundamental values - probity and respect for human dignity and the fundamental rights of people and local communities - in strict accordance with the VINCI Code of Ethics and Manifesto.

Signatories of the United Nations Global Compact since 2003, we support the civic commitment of our employees and strive to favour sustainable projects that create a social bond, help those excluded from the labour market find work, value our heritage and contribute to the development of the regions.

# TECHNICAL EXCELLENCE, INNOVATION AND RESEARCH & DEVELOPMENT

Each project is unique. With technical divisions comprising more than 500 engineers (BIM, geotechnics, methods, systems, logistics, concrete, building, structures, hydraulics, underground works, LNG, etc.), we design and develop innovative, global and modular solutions to design and build exceptional structures. Combined with an agile, project-oriented organisational structure, the areas of expertise of the Major Projects Division and our engineering capabilities, boosted by the integration of the onshore, offshore and underground contractor business lines of Entrepouse, enable us to make a tailor-made offer regardless of the terrain.

These synergies can be traced back to common reference frameworks and shared programmes such as Linktech, the Major Projects Division's exchange and innovation network, and Discern, an R&D project that brings together digital models and augmented reality, coordinated by Dodin Campenon Bernard. All our activities are structured around a differentiating process approach that specifies the activities operating procedures and enables their risks to be identified and managed. This approach, which takes into account our unique qualities as global players and integrates the specific character of the local issues that we come across is a guarantee of our operational excellence and of the quality of the structures that we design and build around the world.

The combination of our know-how and our entrepreneurial spirit is the bond that cements our innovation policy. By rethinking our business lines, we provide a response to the societal challenges of today and tomorrow, and breathe life into our common ambition: global performance that creates technical, financial and environmental value for our clients, stakeholders and the future users of our structures.



**A COMMON DYNAMIC**  
**Tunnel Factory capitalises**  
**on VINCI Construction's**  
cross-functional areas of expertise  
to jointly develop new offers in the  
field of tunnel construction while  
incorporating in particular,  
the use of artificial intelligence.







### TAILOR-MADE SOLUTIONS

Our teams put forward tailor-made solutions designed for extraordinary prototypes.

In this case, the self-propelled, eight-legged barge, Zourite, built specifically to install the 48 piles of the New coastal road viaduct, designed to span land and sea for 100 years.



### AMBITIOUS ENVIRONMENTAL PROGRAMMES

**With the AIO Loop process and a programme dedicated to future wastewater treatment plants, designed to be almost energy independent, our environmental ambition is at the heart of our innovation policy.**

# ENVIRONMENT

VINCI's business lines are directly linked to the challenges of green growth. At a time when the Group is mapping out a more ethical, decarbonised and responsible future for the construction industry, managing our environmental footprint is a crucial marker of our operational performance.



Within the Major Projects Division, ecological transition is at the heart of our activities: hydraulic and soft-mobility infrastructure, waste-to-energy, major energy structures, etc. We strive to contribute to the development of sustainable solutions, ensuring the durability of our models and structures.

In 2020, in light of the shared desire of its entities to pursue this ambition and to write its commitments in stone, the Major Projects Division unveiled its 2030 Environment Plan, which specifies its goal, broken down into three priority areas: climate change, circular economy and natural environment.

Developed alongside men and women in the field, its purpose is to model our environmental strategy and guide our actions from a resolutely operational angle. The culmination of this dynamic process was VINCI's first Environment Day, an echo of the numerous initiatives already undertaken on our worksites, which witness the collective conscience that drives our employees.





#### A COLLECTIVE COMMITMENT

**Our entities are fully committed to preserving the environment and biodiversity:** planting of 300,000 local species along the Trans-Adriatic Pipeline for Speicapag, renewal of the patronage partnership agreement with VNF (Navigable Waterways of France) to support its canal du midi tree-planting programme sponsored by Dodin Campenon Bernard, commitment to the «Companies committed to nature» programme of Act 4 Nature France and AFAQ biodiversity certification awarded to VINCI Construction Terrassement (a first for a public-works company!).



#### BROAD ENVIRONMENTAL OFFERS

**As exemplified by Hydroplus, Equo Vivo and Urbalia,** our companies put forward state-of-the-art solutions in the areas of renewable energy production, ecological engineering, biodiversity and urban agriculture.



**exegy**

#### PIONEERING SOLUTIONS

**Developed by VINCI Construction, Exegy is a low-carbon concrete range** which reduces emissions by up to 70% in comparison with conventional concrete, while retaining at least equivalent strength and durability properties.



# OUR EMBLEMATIC, SYNERGY-BASED PROJECTS

Large structures marked the year of the Major Projects Division and demonstrated, once again, its complementary skills. A quick look at a number of exceptional worksites...

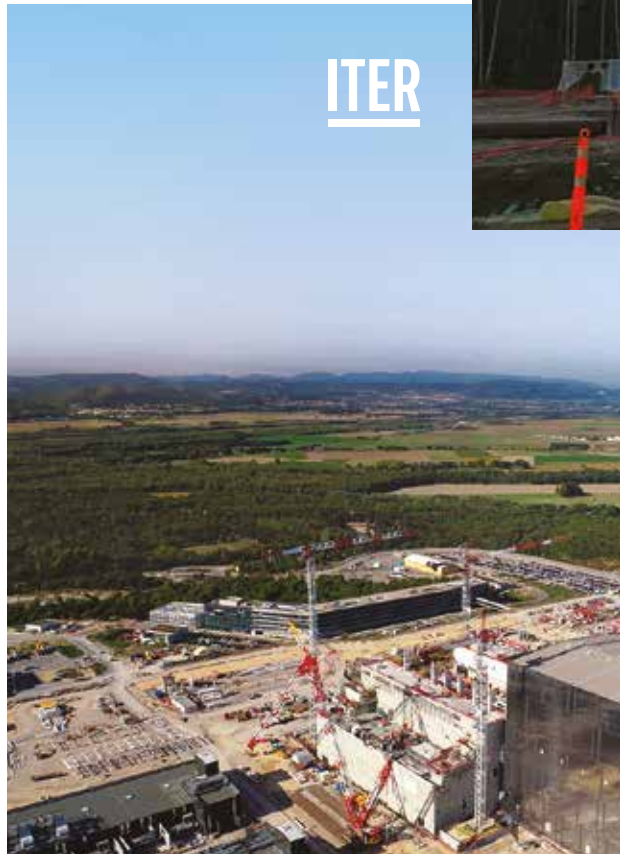


## FRANCE

### **Imagining the energy of the future**

The result of a shared ambition to create a sustainable and inexhaustible source of energy, ITER aims to demonstrate the feasibility of nuclear fusion. In Cadarache, VINCI Construction Grands Projets, Dodin Campenon Bernard and their partners have completed the construction of the Tokamak complex, a reinforced concrete structure (120m long by 80m wide and 80m high) designed to house the fusion reactor, and its nine ancillary buildings. A gold standard in boldness and cooperation, this installation illustrates the Major Projects Division's expertise in major nuclear works.

**ITER**







# Coastal Gas Link



## CANADA

### Transporting natural gas

On the outskirts of Vancouver, Spiecapag is continuing the construction of 82km of the Coastal Gas Link pipeline through British Columbia. The subsidiary is demonstrating its expertise in complex terrain, with a route through the Canadian Rockies to the northwest of the province, where VINCI Construction Grands Projets and Entrepouse Contracting are building a 225,000m<sup>3</sup> liquefied natural gas tank, a testament to the synergies and complementary skills within the Major Projects Division.



## FRANCE

### Promoting soft mobility

The Grand Paris Express, the largest urban project in Europe, aims to connect the territories and the 12 million inhabitants of the Greater Paris region. Working in the heart of densely populated areas, the Major Projects Division is demonstrating its technical excellence on several of the lines under construction, cementing its expertise in soft mobility infrastructure.

VINCI Construction Grands Projets, in association with Dodin Campenon Bernard,

in particular, is in charge of two lots for the future line 18, including the construction of three stations, 11.8km of tunnel, 10 ancillary structures and the management of polluted soil (entrusted to VINCI Construction Terrassement) as well as the construction of a 6.7km viaduct, which will advance the development of the Saclay centre of excellence. Its teams are also working on Line 15 South, digging an 8 km tunnel, building 8 ancillary structures and handling civil engineering for 5 stations.

# Grand Paris Express





One of them, Villejuif Gustave-Roussy, which is symbolic for its architecture and size (65m in diameter and 42m deep), will link it to Line 14 South, which is being built under the aegis of Dodin Campenon Bernard and whose extension to Orly airport will be overseen by the Major Projects Division. On the agenda: a 4.6km tunnel and construction of the new Kremlin Bicêtre Hôpital station.







VIRGINIA, USA

### Rethinking the road network

VINCI Construction Grands Projets and Dodin Campeon Bernard are taking part in the largest infrastructure project ever carried out in this south-eastern US state. Together with their partners, they are extending the I-64 interstate link between Hampton and Norfolk for 2025.

On the agenda: the construction of 5.3km of sea viaducts and new tunnels, as well as the widening of 14.5km of existing roads, while maintaining traffic flow. This work will relieve congestion on an existing network that is extremely busy, with 100,000 daily users.



## Hampton Road Bridges Tunnel





# Femern tunnel



DENMARK, GERMANY

## Promoting trade in Europe

The world's longest submerged road and rail tunnel (18km) will be built at a depth of 40m in the Baltic Sea. This unprecedented project, launched in January 2021 by a consortium led by VINCI Construction Grands Projets, involves laying 89 prefabricated caissons measuring 216 metres long on the seabed. In 2029, this titanic infrastructure will provide a link between Germany and Denmark that takes 7 minutes by train and 10 minutes by car, promoting exchanges in Northern Europe and offering an ecological alternative to air travel!





MOROCCO

**Participating in the energy transition**

On the steep slopes of the Atlas Mountains, VINCI Construction Grands Projets and VINCI Construction Terrassement are building the Abdelmoumen pumped storage power plant (PSPP). This unusually complex project includes the creation of two 1.3 million m<sup>3</sup> reservoirs, the construction of a penstock

over a 550-metre drop and a 350MW hydroelectric plant buried 40 metres below ground.

Starting in 2023, this gigantic «battery» will contribute to the production of green energy on demand and will offer a sustainable solution to the intermittent nature of wind energy in Morocco.

An aerial photograph showing the construction site of the Abdelmoumen Pumped storage power plant. The image captures a vast, arid landscape with reddish-brown soil and sparse vegetation. In the foreground, a large, curved concrete structure, likely part of a reservoir or penstock, is under construction. A long, straight concrete channel or road cuts through the middle ground. In the background, a large, irregularly shaped reservoir is visible, surrounded by steep, rocky slopes. The sky is clear and blue.

# Abdelmoumen Pumped storage power plant



UNITED KINGDOM

### Bringing people together

The HS2 high-speed line is intended to bring the English capital closer to the north of the country. It is the largest infrastructure project seen in the UK in decades. With their local partner, Balfour Beatty, VINCI Construction Grands Projets and VINCI Construction Terrassement teams are working on lots N1 and N2 to build more than 200 structures and tunnels over a distance of almost 90km of new line around Birmingham. As part of the programme to significantly increase rail capacity in the UK, at the end of 2019, they were also awarded the construction of the Old Oak Common station in the heart of London.



## High Speed 2 rail line



## Strasbourg western bypass



FRANCE

### Reinventing responsible urban mobility

Dodin Campenon Bernard and VINCI Construction Terrassement are building 24km of road infrastructure on the outskirts of the capital of the Grand Est region. This work involves no fewer than 50 engineering structures and three non-standard structures, including two viaducts. The Strasbourg western bypass will relieve congestion on the A35 motorway currently running through the city centre, turning it into an urban thoroughfare. Recognised as a public utility, this public-private partnership is designing a new form of mobility that is more respectful of the quality of life of local residents and the environment. In addition to reducing pollution, protecting biodiversity and the Alsace great hamster has been the subject of an ambitious programme, conducted hand in hand with the authorities and associations.

# City Rail Link



CHILE

## Building the airport infrastructure of tomorrow

Santiago's airport is the hub of Chile's air transport system, handling all of the country's international flights and 60% of domestic traffic. To double its capacity, VINCI Construction Grands Projets and its partners are building five new terminals (250,000m<sup>2</sup>) and renovating the existing one. The work will be completed without disrupting the flow of flights and will allow 30 million passengers to be accommodated annually, contributing to the development of one of the most dynamic economies in South America.







## NEW ZEALAND

### Supporting the development of cities

VINCI Construction Grands Projets is leading the Link Alliance, which has launched the largest design-build infrastructure project ever undertaken in New Zealand. Under its leadership, three new stations, 3.5km of railway line extension (including 3.2km of tunnel) and 2km of new track, as well as the entire City Rail Link rail system will be built. All while maintaining traffic on the North Auckland Line. In a rapidly growing Auckland, this scheme designed to accommodate up to 54,000 passengers/hour will double the number of people who can get to the city centre in less than 30 minutes by 2024 and will support sustainable, reliable and fast urban mobility.

## Arturo Merino Benítez airport extension



# REAL SUCCESS IS THE SUCCESS YOU SHARE



1, cours Ferdinand-de-Lesseps  
92500 Rueil-Malmaison - France  
Tel.: +33 1 47 16 35 00  
Fax: +33 1 47 51 91 02

[www.vinci-construction.com](http://www.vinci-construction.com)

**VINCI Construction Grands Projets**  
[www.vinci-construction-projets.com](http://www.vinci-construction-projets.com)

**VINCI Construction Terrassement**  
[www.vinci-construction-terrassement.com](http://www.vinci-construction-terrassement.com)

**Spiecapag**  
[www.spiecapag.com](http://www.spiecapag.com)

**Dodin Campenon Bernard**  
[www.dodincampenonbernard.fr](http://www.dodincampenonbernard.fr)